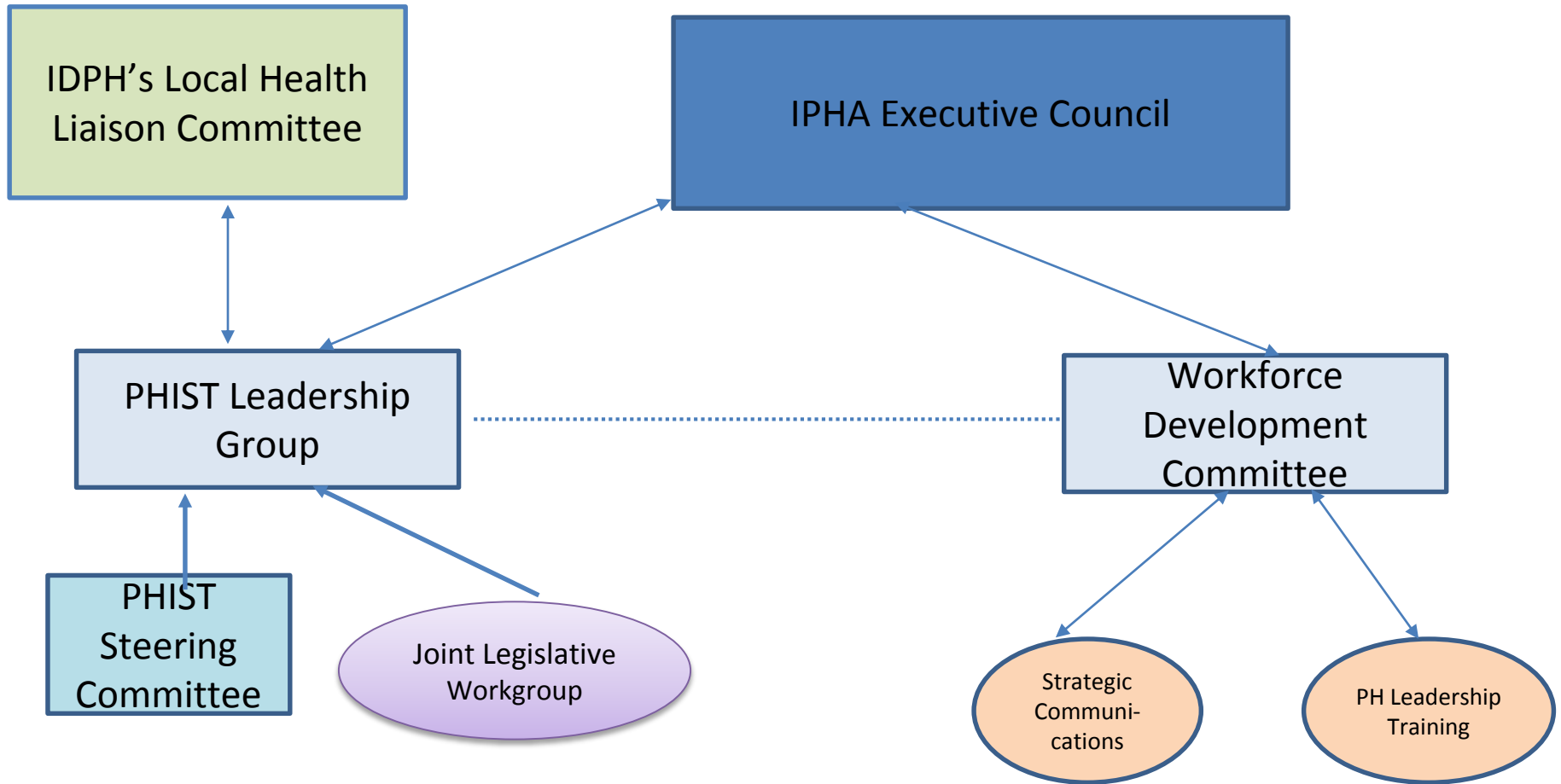


Public Health is Stronger Together (PHIST)

A collaborative strategic initiative including IPHA, IDPH, IAPHA, NIPHC, SIPHC, & UIC
SPH MCPHP



Roles and responsibilities — draft 5.18

Group Title	Purpose	Participants
IDPH’s Local Health Liaison Committee	<ul style="list-style-type: none"> • Address State and Local Health Department function and regulatory preparedness and response issues • Bimonthly meetings • Current areas of focus: Develop responsive communication protocols; Use strategic approaches to address emerging regulatory and legislative issues 	IDPH, IPHA, IAPHA, NIPHC, SIPHC
PHIST Leadership Group	<ul style="list-style-type: none"> • Address governmental public health systems issues • Focus on partnership and collaboration across PH entities • Work to align and coordinate resources toward addressing the seven focus areas and common goals • Made up of the presidents and vice-presidents or president-elects or director and assistant director of the member organizations. Past presidents can choose to remain active. • Chair and facilitator of this group is chosen by the PHIST Leadership Group. • Reports to the Illinois Public Health Association Executive Board. 	IDPH, IPHA, IAPHA, NIPHC, SIPHC
PHIST Steering Committee	<ul style="list-style-type: none"> • Provide strategic and implementation coordination for the Leadership Committee and its workgroups, inform the Liaison Committee • Meeting as needed for preparation • Prepare materials for discussion (e.g. LHD versus SHD roles) • Made up of a representative from local, state, and academic partners and reports to the PHIST Leadership Group. 	IDPH, LHD assoc, UIC SPH MCPHP
Joint Legislative Workgroup	<ul style="list-style-type: none"> — Annually identifies joint public health legislative agenda — Meets throughout legislative session to coordinate advocacy efforts — Advocates for public health legislation and administrative code — Plans and holds annual legislative action day 	IPHA, NIPHC, IAPHA, SIPHC, and IDPH
Workforce Development Committee	<ul style="list-style-type: none"> • Building capacity and leadership for the public health system to improve population health and address health equity • Provides oversight and implementation of PHIST Illinois Workforce Development Plan • Reports to the IPHA Executive Council and PHIST Leadership Group and includes three subcommittees including: <ul style="list-style-type: none"> • Strategic Communications, focused on training public health departments on best practices for communicating the value of public health and planning together toward common communication approaches; • PH Leadership Training, focused on offering PH leadership training and development. 	IPHA, IDPH, IAPHA, NIPHC, SIPHC, IPHI, UIC SPH MCPHP